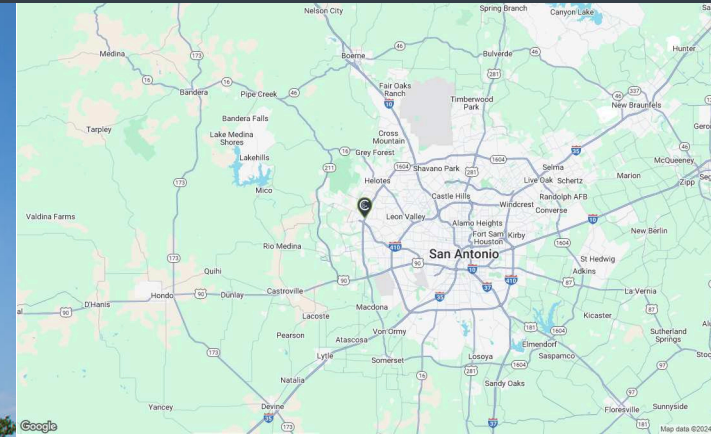


ALAMO RANCH

5503 W LOOP 1604 N // SAN ANTONIO, TX, 78253



OWNED GLA
464,732 SF

LOCATION
Longitude: -98.707055
Latitude: 29.490957

DEMOGRAPHICS
Population
Avg Income

	1 Mile	3 Mile	5 Mile
Population	6,740	98,930	274,366
Avg Income	\$86,043	\$83,303	\$82,303



- Easy access from Loop 1604
- Impressive power center anchored by Super Target, JCPenney, Lowe's, Best Buy, PetSmart, Dick's Sporting Goods
- Large regional pull

FOR LEASING INFORMATION
Nick Freddo
972-535-0440
nfreddo@shopcore.com
www.ShopCore.com

ALAMO RANCH

5503 W LOOP 1604 N // SAN ANTONIO, TX, 78253



This document is for general information purposes only. Any and all features, matters and other information depicted hereon or contained herein are for illustrative marketing purposes only, are subject to modification without notice, are not intended to be relied upon by any party and are not intended to constitute representations or warranties as to any matter, including ownership of the real property depicted hereon, the size and nature of improvements (or that any improvements will be constructed or will continue to exist as depicted), or the identity or nature of any occupants thereof.



FOR LEASING INFORMATION
Nick Freddo
972-535-0440
nfreddo@shopcore.com
www.ShopCore.com

ALAMO RANCH

5503 W LOOP 1604 N // SAN ANTONIO, TX, 78253

SUITE#	Tenant Name	GLA(SF)	SUITE#	Tenant Name	GLA(SF)	SUITE#	Tenant Name	GLA(SF)
NAP 1	LOWE'S (NAP)		26	MASSAGE ENVY	3,000 SF	61	AVAILABLE	1,496 SF
NAP 2	TARGET (NAP)		27A	SCRUBS & BEYOND	3,200 SF	62	PURELY CBD	956 SF
NAP 3	J.C.PENNEY (NAP)		27B	DRAGONS LAIR	1,578 SF	63	STYLE AMERICA	1,165 SF
NAP 4	RAISING CANE'S RESTAURANT		27C	ARCH 2 ARCH	1,500 SF	64	EYEMART EXPRESS	3,578 SF
NAP 5	KNEADERS BAKERY AND CAFE		27D	AVAILABLE	2,352 SF	65	DENTAL ONE	2,711 SF
NAP 6	IN N OUT BURGER		34	DRAGON'S LAIR COMIC & FANTASY	2,900 SF	66	LE NAILS & SPA	1,491 SF
1	MICHAELS	21,262 SF	35	THE CHILDREN'S PLACE	4,100 SF	67	STEAK N SHAKE SIGNATURE	2,186 SF
1B	DEL TACO	2,675 SF	36	CALI NAILS	1,489 SF	67A	TACO BLVD	1,645 SF
2	CATO	5,661 SF	37	YUM THAI	2,197 SF	69	AMAZING LASH STUDIO	2,162 SF
3	SKECHERS USA	8,760 SF	38A	KUMORI SUSHI AND TEPPANYAKI	3,000 SF	73	MATHNASIUM	1,180 SF
4	ULTA SALON	10,117 SF	39A	AVAILABLE	2,151 SF	74	AVAILABLE	1,180 SF
5	MARSHALLS	27,000 SF	39B	ALAMO RANCH CHIROPRACTIC AND WELLNESS GROUP	1,088 SF	75	MOD PIZZA	2,639 SF
6	MAURICES	5,000 SF	40	AVAILABLE	1,231 SF	76	T-MOBILE	2,000 SF
7	SALLY BEAUTY SUPPLY	1,671 SF	41	SUPERCUTS	1,231 SF	77	EUROPEAN WAX CENTER	1,449 SF
8	RUE21	4,400 SF	42	OLD MINE JEWELERS	1,377 SF	78	STARBUCKS	1,725 SF
9	BATH & BODY WORKS	4,764 SF	43	RIDE AWAY BICYCLES	3,185 SF	84	MEN'S WEARHOUSE	5,000 SF
10	NORMANS HALLMARK	3,180 SF	44	FREEBIRDS WORLD BURRITO	2,649 SF	85	HEARTLAND DENTAL CARE	2,847 SF
11	LANE BRYANT	6,600 SF	45	JAMES AVERY JEWELRY	2,435 SF	86	ZALES	2,400 SF
12	RACK ROOM SHOES	6,050 SF	46A	CELL PHONE REPAIR	1,050 SF	86C	JIMMY JOHNS	2,000 SF
13	ROSS DRESS FOR LESS	30,187 SF	46B	ORANGE LEAF FROZEN YOGURT	1,540 SF	87	CRUMBL COOKIES	1,390 SF
14	OLD NAVY	14,999 SF	46C	LENSCRAFTERS	4,200 SF	90	THE VITAMIN SHOPPE	3,500 SF
15	KIRKLANDS	7,807 SF	46D	AVAILABLE	1,578 SF	91	BASKIN ROBBINS	1,211 SF
16	SWEET & SASSY	2,150 SF	46E	DIESEL BARBERSHOP	1,612 SF	92	GINZA RAMEN & POKE	2,600 SF
17	AVAILABLE	2,477 SF	52	HIGH SCHOOL MUSIC	3,476 SF	94	AVAILABLE	2,105 SF
18	BEST BUY	45,000 SF	53	JAMBA JUICE	1,750 SF	95	AT&T	3,000 SF
19	OFFICEMAX	17,996 SF	54A	MENCHIE'S FROZEN YOGURT	1,600 SF	96	GOOD FEET	1,462 SF
20	PETSMART	27,415 SF	55	AVAILABLE	1,400 SF	97	MATTRESS FIRM	3,605 SF
21	DICK'S SPORTING GOODS	50,000 SF	56	ONEMAIN FINANCIAL	1,300 SF	98	LAS PALAPAS	3,500 SF
22	5.11 TACTICAL	7,899 SF	57	ORANGE THEORY FITNESS	2,785 SF	99	JASON'S DELI	5,315 SF
23	KD SALON AND SPA	3,028 SF	58	AVAILABLE	956 SF	106	BJ'S RESTAURANT & BREWHOUSE	9,000 SF
25	FIVE BELOW	8,216 SF						

This document is for general information purposes only. Any and all features, matters and other information depicted hereon or contained herein are for illustrative marketing purposes only, are subject to modification without notice, are not intended to be relied upon by any party and are not intended to constitute representations or warranties as to any matter, including ownership of the real property depicted hereon, the size and nature of improvements (or that any improvements will be constructed or will continue to exist as depicted), or the identity or nature of any occupants thereof.



FOR LEASING INFORMATION

Nick Freddo

972-535-0440

nfreddo@shopcore.com

www.ShopCore.com