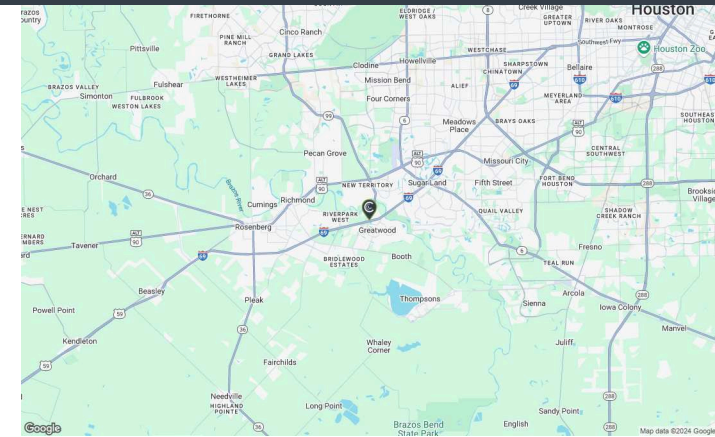


# RIVERPARK

19900 SOUTHWEST FWY // SUGAR LAND, TX, 77479



**OWNED GLA**  
317,297 SF

**LOCATION**  
Longitude: -95.684615  
Latitude: 29.563103

DEMOGRAPHICS	1 Mile	3 Mile	5 Mile
Population	8,317	59,393	146,984
Avg Income	\$136,959	\$141,153	\$134,943

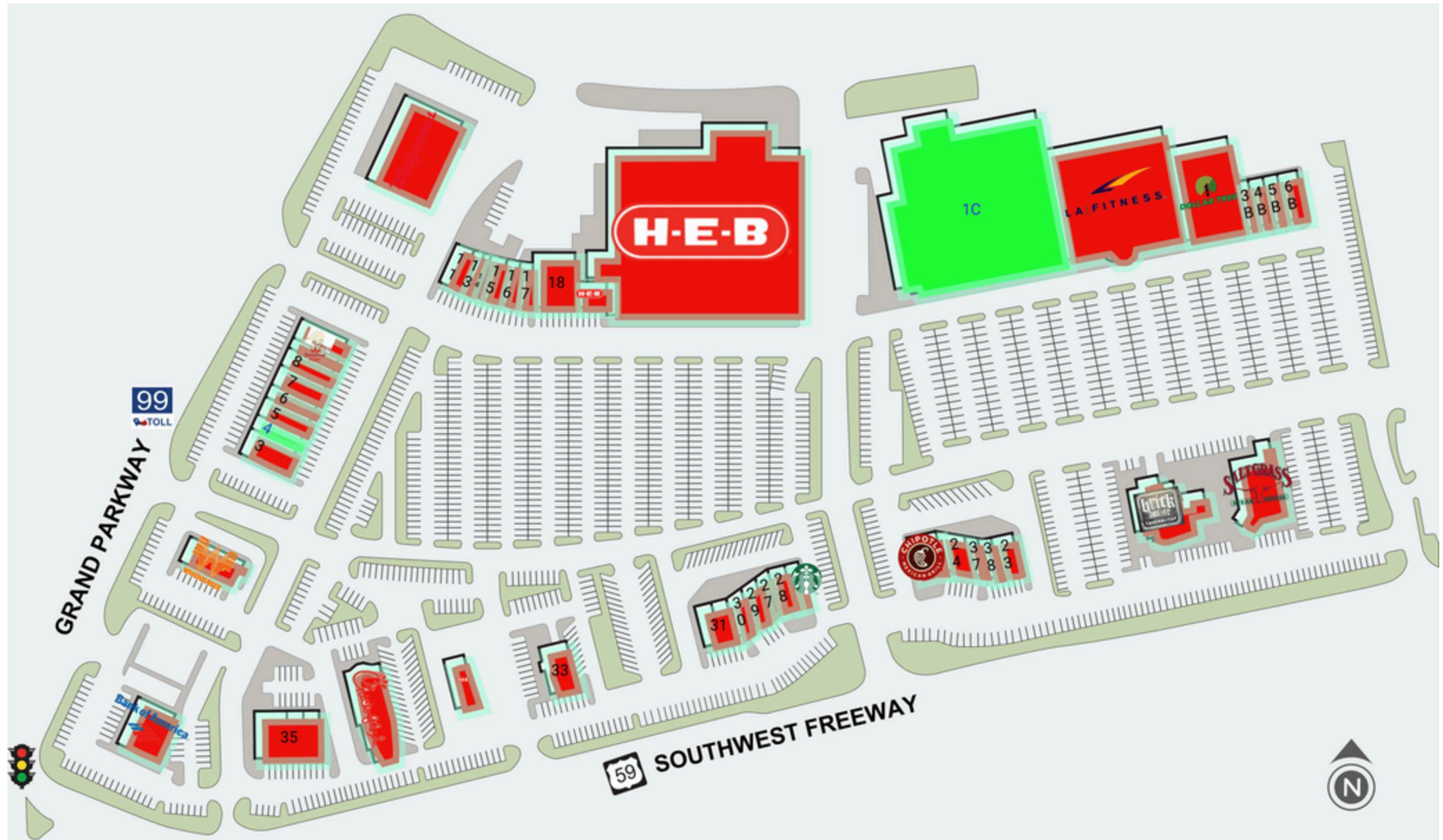
- High visibility and easy access from US-59
- Power center anchored by HEB with an excellent mix of specialty retail, restaurants and services
- Benefits from continued aggressive economic expansion due to its location in the growth corridor of Sugar Land



**FOR LEASING INFORMATION**  
Derek Bramwell  
858-798-1469  
dbramwell@shopcore.com  
www.ShopCore.com

# RIVERPARK

19900 SOUTHWEST FWY // SUGAR LAND, TX, 77479



This document is for general information purposes only. Any and all features, matters and other information depicted hereon or contained herein are for illustrative marketing purposes only, are subject to modification without notice, are not intended to be relied upon by any party and are not intended to constitute representations or warranties as to any matter, including ownership of the real property depicted hereon, the size and nature of improvements (or that any improvements will be constructed or will continue to exist as depicted), or the identity or nature of any occupants thereof.



FOR LEASING INFORMATION  
Derek Bramwell  
858-798-1469  
dbramwell@shopcore.com  
www.ShopCore.com

# RIVERPARK

19900 SOUTHWEST FWY // SUGAR LAND, TX, 77479

SUITE#	Tenant Name	GLA(SF)	SUITE#	Tenant Name	GLA(SF)	SUITE#	Tenant Name	GLA(SF)
1	BANK OF AMERICA	5,170 SF	9-A	SMOOTHIE KING	1,546 SF	26	STARBUCKS	1,500 SF
1B	LA FITNESS	38,000 SF	10	WALGREENS	14,490 SF	27	T-MOBILE	2,000 SF
1C	AVAILABLE	64,382 SF	11	PEACHTREE DENTAL	3,380 SF	28	BELLA SPA-TIQUE	2,268 SF
2	WHATABURGER	3,385 SF	13	MY KID'S DENTIST	1,097 SF	29	ELEVATED WELLNESS CBD	1,600 SF
2B	DOLLAR TREE	15,000 SF	14	H&R BLOCK	970 SF	30	PIZZA HUT	1,610 SF
3	MONGOLIAN/JAPANESE RESTAURANT	2,450 SF	15	SUBWAY	1,400 SF	31	GYRO REPUBLIC	1,286 SF
3B	SMOOTHIE FACTORY	1,350 SF	16	BASKIN ROBBINS	1,400 SF	32	BURGERIM	1,800 SF
4	AVAILABLE	1,050 SF	17	SUPERCUTS	1,400 SF	33	GRINGO'S MEXICAN KITCHEN	6,070 SF
4B	GENERATIONS MEDICAL SUPPLY	1,500 SF	18	TWIN LIQUORS	4,532 SF	34	CHICK-FIL-A	4,304 SF
5	DELUXE NAILS	1,400 SF	19	H-E-B	2,190 SF	35	MATTRESS FIRM	7,499 SF
5B	SPORTCLIPS HAIRCUTS	1,500 SF	20	H-E-B	80,460 SF	35A	MATTRESS FIRM	4,000 SF
6	MAILBOX DEPOT	1,050 SF	21	SALTGRASS STEAKHOUSE	7,600 SF	35B	HOTWORX	1,800 SF
6B	MASSAGE ENVY	3,150 SF	22	BRICK HOUSE TAVERN + TAP	7,100 SF	35C	PRIME URGENT CARE	1,700 SF
7	WAXING THE CITY	2,100 SF	23	MOD PIZZA	3,175 SF	37	JERSEY MIKE'S SUBS	1,325 SF
8	H&H MUSIC COMPANY	1,750 SF	24	PEARL DYNASTY	3,850 SF	38	MATHNASIUM	1,200 SF
9	FIRST WATCH	4,400 SF	25	CHIPOTLE MEXICAN GRILL	2,604 SF			

This document is for general information purposes only. Any and all features, matters and other information depicted hereon or contained herein are for illustrative marketing purposes only, are subject to modification without notice, are not intended to be relied upon by any party and are not intended to constitute representations or warranties as to any matter, including ownership of the real property depicted hereon, the size and nature of improvements (or that any improvements will be constructed or will continue to exist as depicted), or the identity or nature of any occupants thereof.



FOR LEASING INFORMATION  
Derek Bramwell  
858-798-1469  
dbramwell@shopcore.com  
www.ShopCore.com