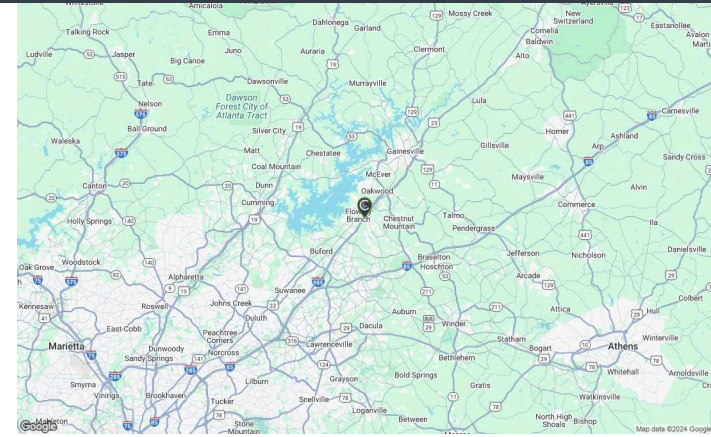


STONEBRIDGE VILLAGE

// FLOWERY BRANCH , GA, 30542



T.J. maxx



KOHL'S



OWNED GLA
483,911 SF

LOCATION
Longitude: -83.911334
Latitude: 34.178526

DEMOGRAPHICS
Population
Avg Income



FOR LEASING INFORMATION

www.ShopCore.com

STONEBRIDGE VILLAGE

// FLOWERY BRANCH , GA, 30542

SUITE#	Tenant Name	GLA(SF)	SUITE#	Tenant Name	GLA(SF)	SUITE#	Tenant Name	GLA(SF)	SUITE#	Tenant Name	GLA(SF)
NAP 1	CHICK FIL-A		110	CHEESEBURGER BOBBY'S	1,813 SF	130	BELLAGIO NAIL SPA	2,749 SF	230	MATHNASIUM	1,639 SF
NAP 2	CHIL'I'S (N.A.P)		112	AT&T	1,807 SF	150	FAMOUS FOOTWEAR	7,020 SF	232	YOUR CBD STORE	1,513 SF
NAP 3	HOME DEPOT (N.A.P)		114	SUPERCUTS	1,205 SF	200	MATTRESS FIRM	4,000 SF	234	LANIER THERAPY IN MO	1,746 SF
NAP 4	KOHL'S		116	GNC	1,205 SF	202	EDIBLE ARRANGEMENTS	1,263 SF	240	SHANE'S RIB SHACK	3,600 SF
NAP 5	MCDONALD'S (N.A.P)		118	SHOGUN JAPANESE STEA	4,825 SF	204	WILD BIRDS UNLIMITED	1,263 SF	280	WELLS FARGO BANK	4,063 SF
NAP 6	TARGET (NAP)		120	J. CHRISTOPHER'S	2,547 SF	206	SALLY BEAUTY SUPPLY	1,440 SF	300	TRUIST BANK	3,865 SF
NAP 7	VERIZON WIRELESS (N.A.P.)		122	MENCHIE'S FROZEN YOG	1,205 SF	210	HIBBETT SPORTS	5,000 SF	310	STONEBRIDGE FAMILY D	2,200 SF
NAP 8	FIREHOUSE SUBS		124	1ST FRANKLIN FINANCI	1,205 SF	215	ROSS DRESS FOR LESS	25,000 SF	312	SALON PURE	3,348 SF
NAP 9	AVAILABLE	1,500 SF	126	GAMESTOP	1,205 SF	220	T.J. MAXX	26,000 SF	320	PETSMART	20,087 SF
WAFFLE HOUSE	AVAILABLE		128	AXIOM STAFFING GROUP	1,205 SF	225	AVAILABLE	5,000 SF			

This document is for general information purposes only. Any and all features, matters and other information depicted hereon or contained herein are for illustrative marketing purposes only, are subject to modification without notice, are not intended to be relied upon by any party and are not intended to constitute representations or warranties as to any matter, including ownership of the real property depicted hereon, the size and nature of improvements (or that any improvements will be constructed or will continue to exist as depicted), or the identity or nature of any occupants thereof.

